



## A Proposal to Safeguard and Manage the Deer Population in Trincomalee Sri Lanka.

( Deer Park with all the facilities for Deer )

**Project Implemented by : Humanitarian Foundation**

**46 Station Road, Dehiwella,  
Sri Lanka.**

**Total Budget                      200,000 Euros**

**Contact Person                      Mohamed Nibraz (U.K)**

**Bank                                      Humanitarian Foundation.**

**Cargill's Bank Cooperate Branch**

**Account No : 001-980 000 020**

**SWIFT CODE : CGRBLKLX**



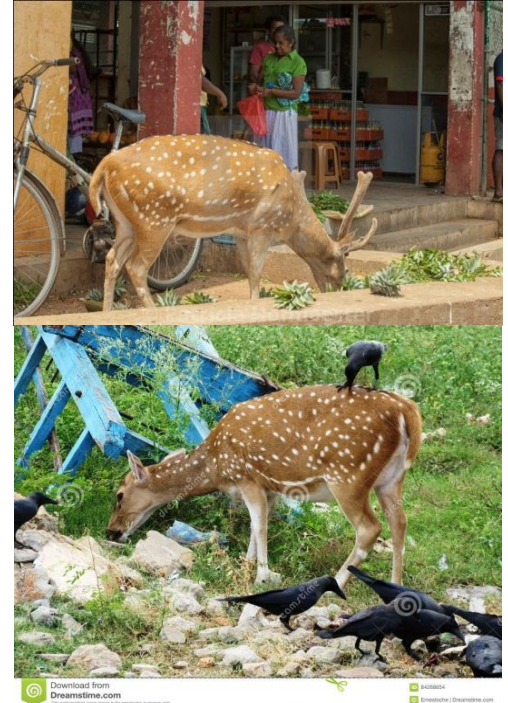


## 1. TRINCOMALEE

**Trincomalee** is the land of the rising sun, with graphic sunrises, golden beaches and an altogether slower pace of life. Coming here forces you to relax, unwind and rejuvenate. But there are other things Trincomalee is the land of the rising sun, with graphic sunrises, golden beaches and an altogether slower pace of life. Coming here forces you to relax, unwind and rejuvenate. But there are other things about this harbor town, things that you ought to know if you're planning on heading to Sri Lanka's beautiful North East coastline.

**Trincomalee** is the only town in South East Asia where humans and deer live together. This report about the Deer in Trincomalee has been filed by Ranjith Jayasundara. These animals live around Fort Fredrick built by the Dutch. The free moving deer has attracted the attention of local and foreign tourists while adding beauty to Trincomalee town. They are under the threat of extinction due to environmental and other problems. They have also got used to eating polythene and other waste scattered in the town. As a result they are inflicted with various diseases and some of them die due to those illnesses. Some of the Deer had been bitten by the dogs. They are also suffering due to lack of drinking water. Authorities should pay their attention to protect the Deer in Trincomalee town.

**Trincomalee**, for whatever reason, has a large population of spotted **deer** who are perfectly comfortable and even sociable with humans. They're especially prevalent inside Fort Frederick, but can be seen all throughout the city, foraging for grass and begging like dogs for food.



### 1.1 The World War II Memorial Cemetery

You might miss it if you aren't looking for it, but somewhere between Trincomalee town and Nilaveli beach sits this magnificent green lawn, strewn with gravestones of many brave men, of different nationalities who fought and fell in the Second World War. Falling under the Commonwealth War Graves Commission, this place in Trincomalee is one of 11 burial grounds strewn across the island and each with a similarity in terms of landscaping, headstone structure, layout and a significant cross that looms over each cemetery, known as the Cross of Sacrifice.



## 1.2 Sperm Whales & Spinner Dolphins

Scuba diving adventures and boat trips are a must when you're in Trincomalee. Why? Because since of late, Trinco's deep blue becomes the migratory home of one of the biggest pods of sperm whales in the world. Add to that the spectacular marine life including spinner dolphins and a vibrant shore reef and the world underwater might seem even better than the breathtaking sunrise.



## 1.3 Early Chinese Settlers

Something that's not often known about Trinco is that it was once home to Chinese settlers brought here by the Dutch and Portugese during their colonial rule of the region. They were brought via the Trincomalee harbor into the island on the pretext of working on cinnamon plantations here. China Bay that sits a short drive away from Trincomalee town is thus named for those who stayed with the island long after the colonials left, having been away for too many generation with nowhere else but Ceylon to call home. Walk through the narrow streets of Trinco town and you just might find a family run Chinese restaurant serving the most authentic Chinese food in the region.

## 1.4 Spotted Deer at Fort Fredrick

Trincomalee is home to the age old Fort Fredrick; built by the Portugese, reconstructed by the Dutch, claimed by the British and currently occupied by the Sri Lankan military – and a small herd of spotted deer! It is said that a couple of spotted deer were shipped here by the British as pets for their militia stationed here. Since the fort is opened to the public however, the incorrect disposal of waste and feeding the deer have caused the herd to get sick. If you are visiting the Fort, remember not to feed the animals and merely observe them from a distance.



## 1.5 Multi-Ethnic Community

The many comings and goings, and the original settlements here combine to make Trincomalee a cornucopia of ethnic delights. Despite hundreds of years of occupation and a 30 year war, Trinco's many faiths and cultures thrive here. On some days the church bells, temple chants, the Islamic call to prayer and kovil sounds emanate simultaneously in a glorious spiritual cacophony that could rival most other countries in the world. Trinco is a shining example of how people from different walks of life can live in harmony.

## 2.About the Spotted Deer

Spotted Deer have a pinkish brown coat marked with white spots and the under parts of this animal remain white in color. Unlike females, the male species grow antlers, which are shed once a year. Usually, the antlers have three prongs and are curved in a lyre shape. When male spotted deer are at their prime during breeding, these antlers can extend to a whopping two and a half feet in length. These deer are also known for their delicate balancing act – standing on their hind legs to reach out for leaves and fruits on trees.

It is not an uncommon sight to see young male deer deeply engrossed in brawls with each other. In most cases, the elder matured ones resort to horning, pawing and marking. The Chital species has a very extended breeding season, particularly because of the tropical climate in Sri Lanka. Births can occur at any time throughout the year. This is the reason why antler shedding cycles of males are not synchronized and some females are fertile at all times of the year. Irrespective of size and other factors, male Chital that have hard antlers are more dominant than those that don't have antlers and those that have soft velvet-like antlers.

The Spotted Deer are true herbivores, living only on grass, leaves and fruits. These harmless animals are seen living together in groups of about 10-16 animals. When the habitat conditions are exceptional: availability of plenty of water, grassland and vegetation, herds of more than 100 animals have been seen.





### 3.Threat to deer population in Trincomalee

#### 3.1.Dogs.

**They may be our "best friends" but dogs have also emerged as a major threat to wildlife.**

Scientists say they have contributed to the extinction of nearly one dozen wild bird and animal species. The deer population in Trincomalee is highly affected by the stray dogs which has taken the lives of innocent deer who are roaming in the town.

As such, they have become the third worst human-introduced predators after cats and rats. Now dogs are said to threaten nearly 200 species worldwide, some of which are critically endangered, studies suggest.

And yet, feral and free-ranging dogs have received surprisingly little attention, conservationists say.

In a recent study carried out on dogs in Chile, the authors said: "Conservationists in Chile and elsewhere see urgency in controlling the impact of free-ranging dogs on wildlife."

It found dog owners were not concerned about the issue and many allowed their pets to move freely in the wild.



#### 3.2.Deer Vehicle collision

The increasing number of deer–vehicle collisions in Trincomalee during recent decades poses a serious threat to animal welfare and increasing costs for society. A number of innocent deer has died due to the negligent and irresponsible drivers in the area .This has become a heavy threat to the deer population in the area. A number of death of innocent deer has occurred during the recent times.



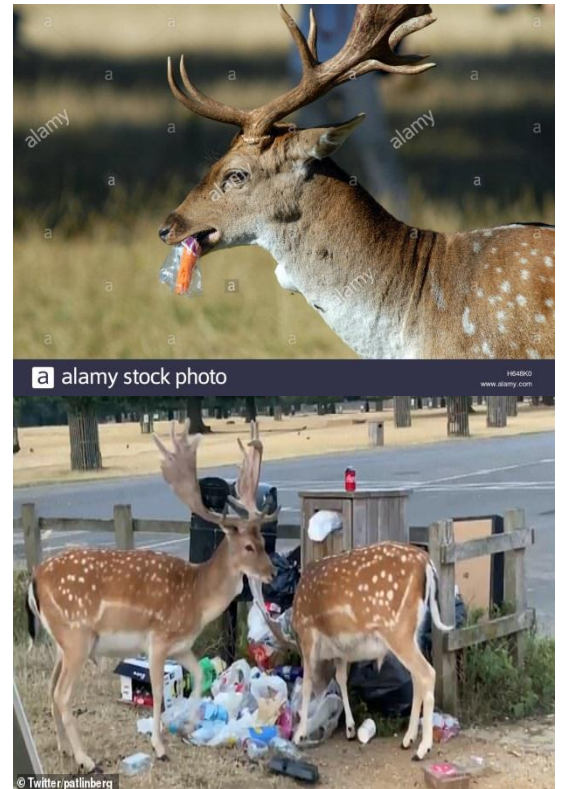
### 3.3.Eating Polythene / Garbage

The Veterinary Doctors said that masses of plastic bags and snack packets were found in the stomachs of the deer which died between March and June this year.

"The deer probably think that the snacks and the plastic packs covering them are both food," he said, adding the animals normally eat grass and acorns.

"They might also eat plastic bags dropped on the ground," he said, adding that he believed such cases had increased recently "due to the growing number of visitors".

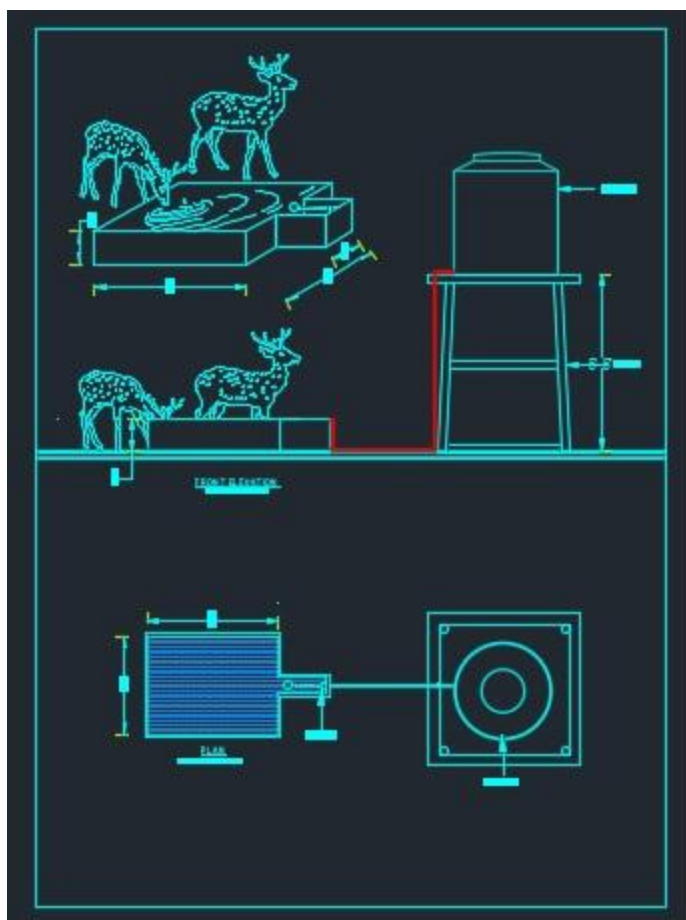
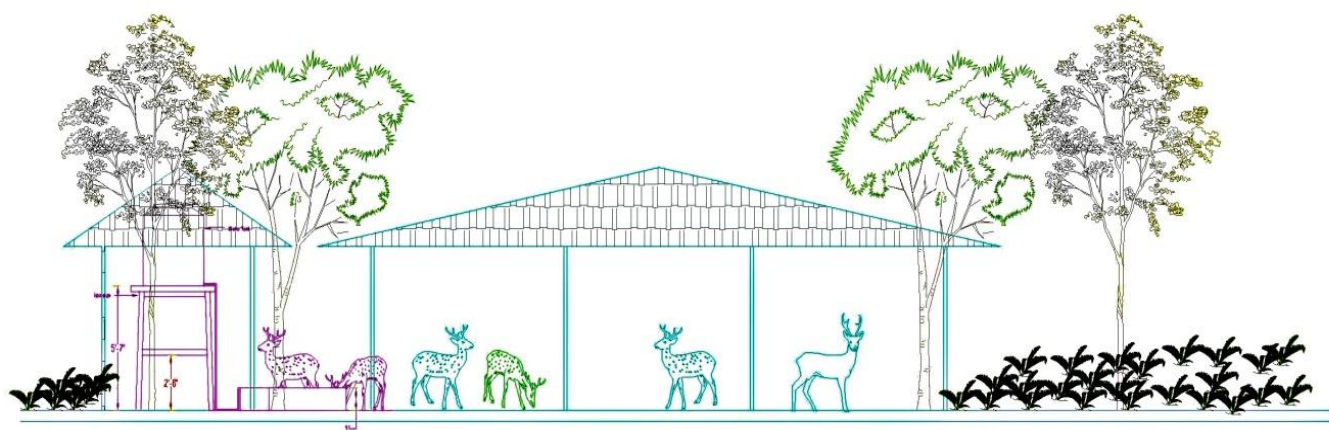
The Plastic bags/ Polythene etc has become a major treat the life of the deer population in Trincomalee.



### 4. Proposed Deer Park in Trincomalee.

Humanitarian Foundation has proposed to build a Deer Park in Trincomalee . The land for the park has been allocated by the Council of Trincomalee and all the approvals has been received by the government authorities for a Deer park in Trincomalee.

All infra-structure facilities for the deer will be provided in the park with a shop which will sell only food items consumed by the deer so that the foreign and local tourist can buy the food from the shop and feed the animals if they prefer.



## **5.MONITORING**

- State the indicators (timing and methodology) you will use in order to monitor during and at the end of the project.

Monitoring has to be carried out based on the planned objectives and indicators.

The project will be monitored by different people at different levels:

### **5.1. Monitoring by the field office:**

The project coordinator will prepare a quarterly monitoring/ progress report with his/her observations, comments and recommendations and forward it to the Programme Director (PD).

### **5.2. Monitoring from the headquarters' level:**

A team from the H.F Co-coordinating Secretariat will visit the project areas once in a month and conduct a project review with the project team and visits project areas on random basis and submit their report to Managing Trustee Programme/ PD. PD will take necessary action to keep the Donor informed about the progress of the project.

## **6.Evaluation:**

### **6.1. Mid-term evaluation:**

This will be conducted by the H.F Programme Unit at the Coordinating Secretariat (CS) by the middle of the project implementation to find out as whether the project is being implemented effectively and the results are achieved as expected for the period or not? And if there are any shortcomings, the evaluation team will identify the causes and make suitable recommendations to overcome them and draw the implementation plan for the rest of the activities.

### **6.2. Output evaluation:**

This evaluation will be done by the Consultants of H.F just after the completion of the project. They will pay field visits to the project sites and conduct interviews etc. and analyze whether the project has produced results as expected. At the end of the evaluation they will submit a report to H.F for necessary action. A copy of the evaluation report will be sent to the Donor.



### 6.3. Impact evaluation:

This will be done after few months of the project completion by outside consultants appointed by the Donor or H.F or by both parties. These consultants will do their independent evaluation to see the project impact and submit a comprehensive report to the Donor with a copy to H.F .

However, the Donor has the right to appoint anybody to do any evaluation at any time with the consent of H.F . Fullest co-operation will be given by H.F for this purpose.

### **Reporting:**

H.F will receive quarterly progress reports (performance + financial) from the Field office. Reports will be submitted to the Donor by H.F as agreed in the project agreement. Reports of any other surveys or studies carried out by H.F in during the project period will also be forwarded to the Donor for information.

- Describe the financial management system, including internal financial control. The finance is handled by the Finance unit of H.F and district level finance officer is responsible for all types of transactions. All the source documents will be maintained and made available in the field office. In addition to this H.F internal audit team will check all transactions and provide the recommendations to the management for further action
- Please state shortly the experience and capacity of your organisation with implementing this type and this size of projects

H.F has relevant capacity and experience on emergency projects over several years from 1993 onwards. We actively took part in various emergency operations in the past both man made disaster and natural disaster also. We have maintained a very good relationship with the Donors and implemented several emergency related projects such as Muthor displacement, flooding in Mannar Muthoor ,Eastern parts of the Island etc.

H.F have very good track record in construction of temporary shelters, toilets, cleaning of wells and digging wells. Our team members are very much capable and skilful to handle the above tasks. The experience which H.F has gained by the implementation of the Swarnapoory Project, Housing project in Kalmunai is an added advantage for the implementation of this new project.

During our past and present experience we are much focus on health awareness and Psycho social counselling. Our team members are much more committed and knowledge full for working in this areas.

### **. Description of the NGO**

Humanitarian Foundation is a non-government, non-political and non-religious , non governmental organization working in Sri Lanka for the vulnerable/marginalized economically poor, internally displaced and victimized people of war, religious and ethnic minorities to improve their basic facilities for a peaceful life through participatory community oriented rehabilitation and development, human rights and humanitarian activities

Humanitarian Foundation is legally registered under the Department of Social Services in Sri Lanka as a non-government, non-religious and non-profit making organization

#### **Vision:**

Humanitarian Foundation strives towards the realization of a society in which justice, equality and human rights respected and people lead peaceful life in spite of various differences.

#### **Mission:**

Humanitarian Foundation the grievances of all human beings irrespective of caste, religion, ethnicity and nationality and creates opportunities for the development of affected and underprivileged people”

#### **Activities**

1. Allocation of land ( already done by the Municipal Council).
2. Building the fence around the land.
3. Building tents to the Deer to rest
4. Providing water facilities to the deer
5. Planting the trees.
6. Growing grass in the land.
7. Constructing a shop for deer food near the land for the local and foreigners to provide food for the deer.

**Mohamed Nibraz**

**Director International Affairs.**